



BESANT HILL SCHOOL



2022 Covid-19 Safety Plan  
Besant Hill School of Happy Valley  
Ojai, CA



# Reopening Committee

## Alex Smith

CEO,  
Besant Hill School  
ASmith@besanthill.org  
(805) 646-4343

## Portia Johnson

Head of School,  
Besant Hill School  
PJohnson@besanthill.org  
(805) 646-4343  
(805) 223-5698 (cell)

## Cindy Gagnon

Director of Health Services,  
Besant Hill School  
CGagnon@besanthill.org  
(805) 646-4343  
(770) 337-5624 (cell)

## Megan Walton

Assistant Head of School,  
Besant Hill School  
MWalton@besanthill.org  
(805) 646-4343  
(440) 477-7464 (cell)

## Claire Lowndes

Director of Academics,  
Besant Hill School  
CLowndes@besanthill.org  
(805) 646-4343

*Aún Aprendo - "I am still learning."*



## TABLE OF CONTENTS

<b>1. COVID-19 Prevention Plan</b>	<b>5</b>
<b>2. General Measures</b>	<b>6</b>
<b>3. Food Services</b>	<b>7</b>
<b>4. Promote Healthy Hygiene Practices</b>	<b>8</b>
<b>5. Intensify Cleaning, Disinfection and Ventilation</b>	<b>9</b>
Cleaning and Disinfecting: General	9
Cleaning and Disinfecting Procedures	11
Cleaning and Disinfecting Schedules	14
<b>6. Limit Sharing</b>	<b>19</b>
<b>7. Housing under Authority of Besant Hill School</b>	<b>20</b>
<b>8. Testing Strategy</b>	<b>21</b>
<b>9. Training and Education of Staff and Students</b>	<b>23</b>
<b>10. Check for Signs and Symptoms</b>	<b>25</b>
<b>11. Plan Quarantine and Isolation</b>	<b>26</b>
<b>12. Case Reporting, contact tracing and investigation</b>	<b>29</b>
<b>13. Maintain Healthy Operations</b>	<b>29</b>
<b>14. Considerations for Partial or Total Closures</b>	<b>30</b>
<b>15. Considerations for Fitness and Athletics</b>	<b>31</b>
<b>16. Vaccinations</b>	<b>31</b>



# Forward

Besant Hill School was founded on 520 acres in the Upper Ojai Valley in 1946. Today, Besant Hill School operates as a college preparatory boarding and day school for grades 9-12. Our current enrollment is 75 students, 10 of which are day students who will commute to campus from the Ojai area. 80% of the 50 member faculty and staff live on campus. Our physical space allows and encourages time spent outdoors interacting with nature. Classrooms all have windows that open in order to bring in as much fresh air as possible most months during the year. As a community, we are dedicated to the health, safety, and welfare of all its members.

*Aún Aprendo - “I am still learning.”*



# 1. COVID-19 PREVENTION PLAN

Plan	Person(s) Responsible	Date of Implementation
1. Risk assessment of all work areas, work tasks, and student interactions to determine what areas required modification in order to ensure compliance.	Health and Wellness Committee	Summer 2021
2. Faculty, staff, students and parent communications will go out to the community as we approach the start of the Fall semester, and on-going as needed.	Health and Wellness Committee	Summer 2021
3. This plan will be posted on the Besant Hill School website, along with the Cal OSHA CPP.	Health and Wellness Committee	Summer 2021
4. Plan will be evaluated routinely for compliance and need for improvement. An annual review and update will be performed.	Health and Wellness Committee	Ongoing
5. All staff and students with Covid-19 illness will be evaluated to determine causative reasons that contributed to the infection. This Covid-19 plan will be updated if needed to prevent further illness from occurring.	Director of Health Services	Ongoing



## 2. GENERAL MEASURES

Plan	Person(s) Responsible	Date of Implementation
1. Continue close communication with Ventura County Health Department and Office of Education.	Director of Health Services	Ongoing
2. Continue to monitor updated information from State of California Department of Public Health, CDC, The Association of Boarding Schools and other organizations supporting the boarding and independent school community.	Health and Wellness Committee	Ongoing
3. Repopulation of campus: We repopulate the campus over a 3 day period. Students will move into individual dorms by appointment only, so that the number of persons in the dorm at any one time is limited. Unvaccinated students will be roomed together until their vaccination status changes, (i.e. international students who arrive unvaccinated secondary to no access to vaccination in their home countries, but will receive vaccine in the US).	Assistant Head of School	August 2021
4. In the case of repeated closures of classes, dorms or the entire campus, secondary to persons being infected with Covid-19, the school will return to virtual learning.	Health and Wellness Committee	Implemented as needed
5. For school year 2021-2022, mandating influenza, Covid and Meningitis vaccine for all students and staff. Allowing for medical exemption.	Director of Health Services	August 2021
6. Visitors: Campus access is limited to only those with direct relationship with the school.	Health and Wellness Committee	Ongoing





### 3. FOOD SERVICES

**Plan**

1. We will maximize physical distance as much as possible while eating, especially indoors. More outside seating will be included on the commons lawn.
2. We will clean frequently touched surfaces  
Food services will continue to adhere to guidelines established by the health department.
3. Increased the number of hand sanitizer stations throughout campus. Outside of every classroom, dining commons, dorms, theatre, and main office. Only using hand sanitizer that is at least 60% ethyl alcohol.

**Person(s)  
Responsible**

Health and Wellness  
Committee

CEO

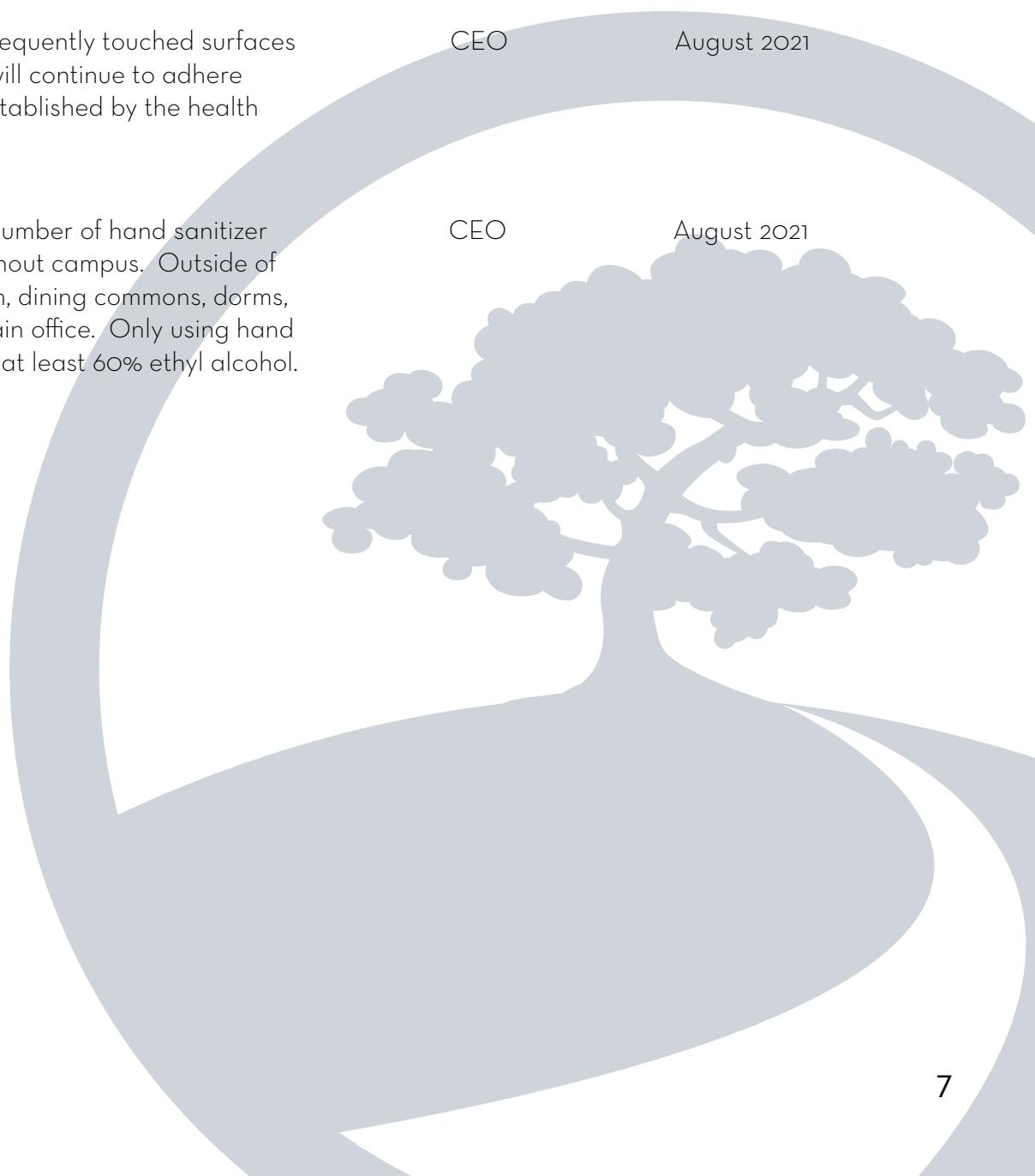
CEO

**Date of  
Implementation**

August 2021

August 2021

August 2021





## 4. PROMOTE HEALTHY HYGIENE PRACTICES

### Plan

1. Community-wide promotion and enforcement for washing hands, avoiding contact with one's eyes, nose and mouth, and covering coughs and sneezes. Hand sanitizing before each meal. In-person education has occurred which has been reinforced with written and recorded materials. More education will be presented during orientation.
2. Touchless soap dispensers in all bathrooms.
3. Increased the number of hand sanitizer stations throughout campus. Outside of every classroom, dining commons, dorms, theatre, and main office. Only using hand sanitizer that is at least 60% ethyl alcohol.
5. Increased signage throughout campus that promote all of our protective measures and expected compliance.

### Person(s) Responsible

Health and Wellness Committee

CEO

CEO

Health and Wellness Committee

### Date of Implementation

August 2021 and Ongoing

August 2021

August 2021

August 2021





## 5. INTENSIFY CLEANING, DISINFECTION, AND VENTILATION

### *Cleaning and Disinfecting: General*

Plan	Person(s) Responsible	Date of Implementation
1. Education for all staff and faculty: Training session for All Staff Meeting prior to school opening. Persons not attending will be provided education prior to first day of school.	Health and Wellness Committee	August 2021
2. New shared responsibility. Reducing the risk of exposure to COVID-19 by cleaning and disinfection is an important part of reopening Besant Hill School. Everyone has a role in making sure our community is as safe as possible to remain open.	Health and Wellness Committee	August 2021
3. Normal routine cleaning with soap and water will decrease how much of the virus is on surfaces and objects, which reduces the risk of exposure. Disinfection using EPA - approved disinfectants can also help reduce the risk. Disinfection of surfaces and objects touched by multiple people is important. When EPA-approved disinfectants are not available, alternative disinfectants can be used safely and effectively.	CEO	August 2021
4. PPE: Gloves: Wear disposable gloves when disinfecting. Gloves are discarded after each use. Clean hands immediately after gloves are removed. Soap and Water is preferable, hand sanitizer otherwise. Eye Protection: When there is potential for splash or splatter in the face.	CEO	August 2021



## 5. INTENSIFY CLEANING, DISINFECTION, AND VENTILATION

### *Cleaning and Disinfecting: General*

#### **Plan**

5. Cleaning kit: This is a tote that is located in each space (classrooms, main office) where cleaning is performed routinely throughout the day: 32oz bottle of disinfectant with spray nozzle, One roll of shop towels. One box of gloves, One Ziplock baggie of face masks (in case someone does not have one), One Ziplock baggie of wipes specifically for electronic devices, Maintenance Department is the keeper of supplies and is responsible for keeping Cleaning Kit adequately stocked.

6. Shared items are allowed. When necessary, disinfection between use will be enforced.

#### **Person(s) Responsible**

CEO

#### **Date of Implementation**

August 2021

Health and Wellness Committee

August 2021



## 5. INTENSIFY CLEANING, DISINFECTION, AND VENTILATION

### *Cleaning and Disinfecting Procedures*

Plan	Person(s) Responsible	Date of Implementation
1. Indoor areas, hard surfaces: Faculty: Using appropriate PPE - when surfaces are obviously soiled, wipe down soiled area using cleaning spray.	CEO	August 2021
2. Maintenance: at end of the day. Wear appropriate PPE. Clean obviously dirty surfaces using soap and water first. Disinfect if required, all hard surfaces, especially high touch surfaces, (i.e. desks, door handles, light switches, etc.	CEO	August 2021
3. Disinfectant Procedures: We are using Magic Wand Diamond quaternary ammonium disinfectant which is EPA-registered (#10324-63), reconstituted and filled in to 32oz. spray bottles The proper dilution is: 3 ounces to 5 gallons of water. Maintenance is responsible for keeping containers filled. Follow the instructions on the label to ensure safe and effective use of the product. Keeping the surface wet for 10 minutes. Wearing gloves and good ventilation during use of the product. Use no more than the amount recommended on the label. Use water at room temperature for dilution (unless stated otherwise on the label). Avoid mixing chemical products. Label diluted cleaning solutions. Store and use chemicals out of the reach of children . You should never eat, drink, breathe or inject these products into your body or apply directly to your skin as they can cause serious harm.	CEO	August 2021



## 5. INTENSIFY CLEANING, DISINFECTION, AND VENTILATION

### *Cleaning and Disinfecting Procedures*

#### Plan

4. Alternative disinfectants: These products are only to be used in case of emergency or our inability to procure supplies. Diluted household bleach solutions may also be used if appropriate for the surface. Check the label to see if your bleach is intended for disinfection and has a sodium hypochlorite concentration of 5%-6%. Ensure the product is not past its expiration date. Follow manufacturer's instructions for application and proper ventilation. Never mix household bleach with ammonia or any other cleanser. Leave solution on the surface for at least 1 minute. To make a bleach solution, mix: 5 tablespoons (1/3rd cup) bleach per gallon of room temperature water OR 4 teaspoons bleach per quart of room temperature water. Bleach solutions will be effective for disinfection up to 24 hours. Alcohol solutions with at least 70% alcohol may also be used.

5. Vacuum as usual. Use a vacuum equipped with a high-efficiency particulate air (HEPA) filter. Do not vacuum in space that is occupied. When vacuuming, a mask should be worn.

6. Electronics. For electronics, such as tablets, touch screens, keyboards, AND remote controls clean/disinfect prior to use. Follow manufacturer's instruction for cleaning and disinfecting. If no guidance, use alcohol-based wipes or sprays containing at least 70% alcohol. Dry surface thoroughly.

#### Person(s) Responsible

CEO

CEO

CEO

#### Date of Implementation

August 2021

August 2021

August 2021



## 5. INTENSIFY CLEANING, DISINFECTION, AND VENTILATION

### *Cleaning and Disinfecting Procedures*

#### **Plan**

7. Laundry: Routine: Student Orientation to laundry procedures by dorm staff. Laundry products are not to be shared. Limit number of persons in the Laundry space to one at a time, provide disposable gloves and hand sanitizer in each laundry space. Guidance on proper laundry procedures; clothing, towels, linens and other items. Launder items according to the manufacturer's instructions. Use the warmest appropriate water setting and dry items completely.

8. Cleaning and disinfecting outdoor areas. Outdoor areas generally require normal routine cleaning, but do not require disinfection. High touch surfaces made of plastic or metal, such as grab bars and railings should be cleaned routinely. Outside dorm furniture and tables disinfected daily. Outside picnic tables cleaned/ disinfected daily. Cleaning and disinfection of wooden surfaces or groundcovers is not recommended. Sidewalks and roads should not be disinfected.

<b>Person(s) Responsible</b>	<b>Date of Implementation</b>
------------------------------	-------------------------------

Assistant Head of School	August 2021
--------------------------	-------------

CEO	August 2021
-----	-------------



## 5. INTENSIFY CLEANING, DISINFECTION, AND VENTILATION

### *Cleaning and Disinfecting Procedures*

#### **Plan**

9. Alternative disinfection methods. The efficacy of alternative disinfection methods, such as ultrasonic waves, high intensity UV radiation, and LED blue light against COVID-19 virus is not known. EPA does not routinely review the safety or efficacy of pesticidal devices, such as UV lights, LED lights, or ultrasonic devices. Therefore, EPA cannot confirm whether, or under what circumstances, such products might be effective against the spread of COVID-19. CDC does not recommend the use of sanitizing tunnels. There is no evidence that they are effective in reducing the spread of COVID-19. Chemicals used in sanitizing tunnels could cause skin, eye, or respiratory irritation or damage. CDC only recommends use of the surface disinfectants identified on List N against the virus that causes COVID-19.

#### **Person(s) Responsible**

CEO

#### **Date of Implementation**

August 2021





## 5. INTENSIFY CLEANING, DISINFECTION, AND VENTILATION

### *Cleaning and Disinfecting Schedules*

Plan	Person(s) Responsible	Date of Implementation
1. Reopening after breaks: if the space has cleaned, and unoccupied for 7 days or more, it will only need normal routine cleaning to reopen the area. Maintenance responsibility.	CEO	August 2021
2. Schedule: Routine/Daily. Clean and disinfect if necessary, shared areas and frequently touched surfaces using EPA-registered disinfectants at the end of each day.	CEO	August 2021
3. The following spaces are cleaned daily: Main Office, Student Affairs, Asst. Head of School Office, Classrooms, Bathrooms near Student Affairs, Atelier, Library, Theatre, Dining Commons and Bathrooms, All Dorms.	CEO	August 2021
4. The following spaces are cleaned once per week: Therapist Room, Laundry Room, Windows in the Dining Commons.	CEO	August 2021
5. Kitchen Staff: Continue current cleaning, disinfecting and sanitizing procedures.	CEO	August 2021



## 5. INTENSIFY CLEANING, DISINFECTION, AND VENTILATION

### *Cleaning and Disinfecting Schedules*

#### **Plan**

6. Someone is sick (non-quarantine/isolation location): Close off areas used by the person who is sick. Open outside doors and windows to increase air circulation in the area. Wait 24 hours before cleaning or disinfecting. If 24 hours is not feasible, wait as long as possible. Once an area has been appropriately disinfected, it can be opened for use. Persons without close contact with the person who is sick can return to work immediately after disinfection. If more than 7 days has passed since the person who is sick, visited or used the facility, additional cleaning and disinfection is not necessary. Continue routine cleaning and disinfection. Vacuum the space if needed. Use a vacuum equipped with a high-efficiency particulate air (HEPA) filter. Do not vacuum a room or space that is occupied. Wait until the room or space is empty to vacuum, such as at night, for common spaces, or during the day for private rooms. When vacuuming, a mask must be worn.

#### **Person(s) Responsible**

CEO

#### **Date of Implementation**

August 2021



## 5. INTENSIFY CLEANING, DISINFECTION, AND VENTILATION

### *Cleaning and Disinfecting Schedules*

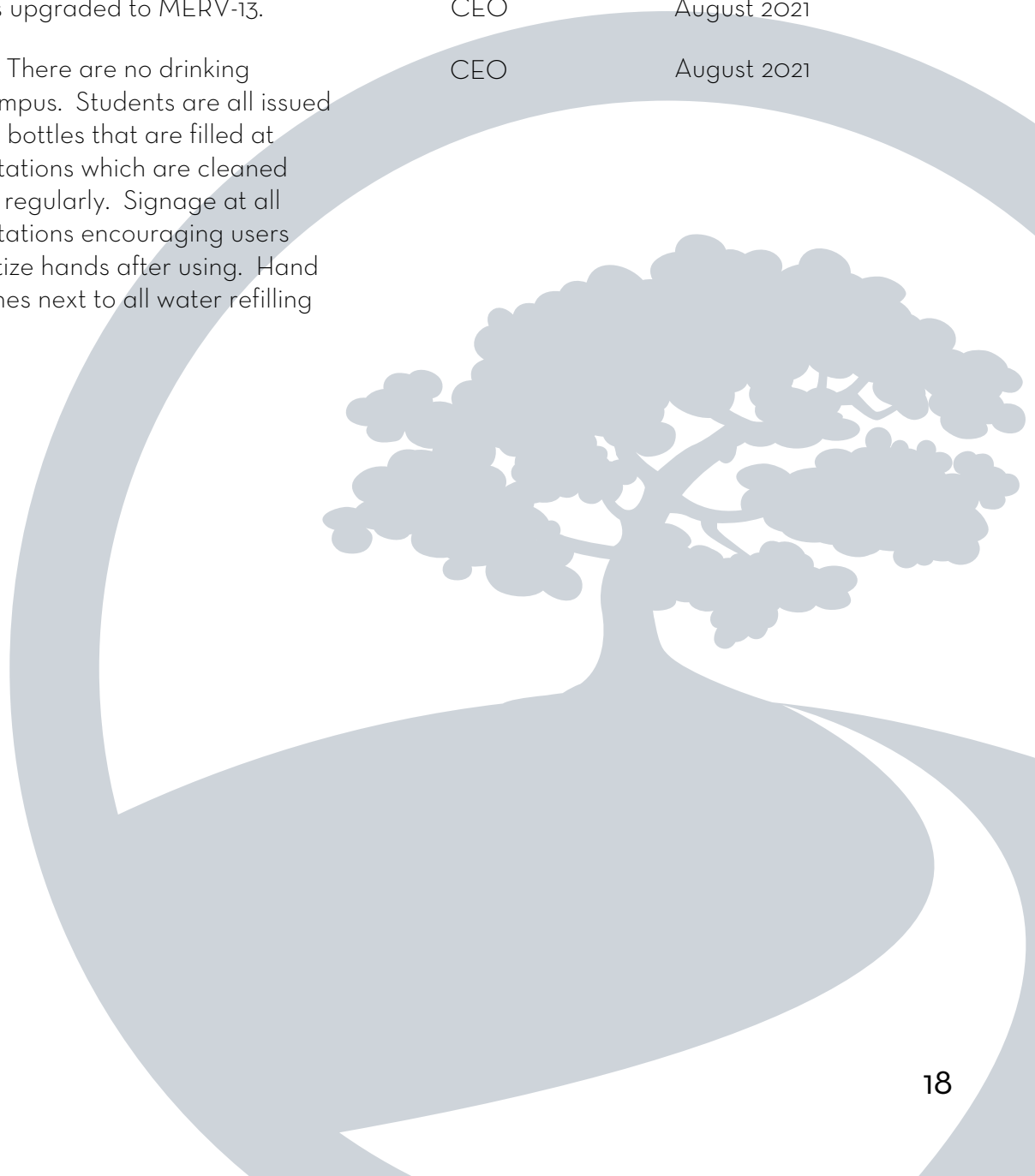
Plan	Person(s) Responsible	Date of Implementation
<p>7. Quarantine and Isolation Areas. The person who is in quarantine/isolation will stay separated from other members of the community and are responsible for cleaning of their space. Clean the area around the person who is sick when needed. Shared bathroom: Clean and disinfect after each use, done by the sick individuals. Once quarantine/isolation area is vacated, wait 24 hours (if possible) and then clean/disinfect entire space. Maintenance responsibility. Cleaning will be done wearing disposable coveralls, gloves and mask. Follow Cleaning/Disinfecting guidelines outlined for Cleaning and Disinfecting hard and soft surfaces, electronics and Laundry.</p>	CEO	August 2021
<p>8. Laundry Sick individual: Wear disposable gloves when handling dirty laundry from a person who is sick. Dirty laundry from a person who is sick can be washed with other people's items. Do not shake dirty laundry. Clean and disinfect clothes hampers. Remove gloves, and wash hands right away.</p>	Assistant Head of School	August 2021
<p>9. Ventilation: Our classrooms allow for the opening of windows and doors to provide the influx of fresh air. When necessary, mechanical ventilation systems will be placed on "fresh air" setting.</p>	Director of Academics	August 2021



## 5. INTENSIFY CLEANING, DISINFECTION, AND VENTILATION

### *Cleaning and Disinfecting Schedules*

Plan	Person(s) Responsible	Date of Implementation
10. HVAC filters upgraded to MERV-13.	CEO	August 2021
11. Water systems: There are no drinking fountains on campus. Students are all issued their own water bottles that are filled at water refilling stations which are cleaned and disinfected regularly. Signage at all water refilling stations encouraging users to wash or sanitize hands after using. Hand sanitizer machines next to all water refilling stations.	CEO	August 2021





## 6. LIMIT SHARING

### Plan

1. Sharing of items is not encouraged.
2. All students will have their own electronic equipment and will be educated to not share.

### Person(s) Responsible

Health and Wellness Committee  
  
Assistant Head of School and Director of Academics

### Date of Implementation

August 2021  
  
August 2021 and Ongoing





## 7. HOUSING UNDER AUTHORITY OF BESANT HILL SCHOOL

Plan	Person(s) Responsible	Date of Implementation
1. All dorm rooms have been assessed and modified to provide for as much physical distancing as possible.	Assistant Head of School	August 2021
2. Bathroom assignments by dorm grouping will allow a smaller number of students to utilize a shared bathroom space at any time.	Assistant Head of School	August 2021
3. See cleaning and disinfecting procedures and schedules above.		
4. Signage throughout dorm spaces reminds residents of hand hygiene.	Health and Wellness Committee	August 2021
5. Education has occurred for all students and will be reinforced during on-campus orientation. Faculty and dorm staff have been trained on Covid-19 transmission and mitigation strategies.	Health and Wellness Committee	August 2021
6. Students living in multi-student rooms are deemed a "household cohort". Household cohort members regardless of vaccination status, do not need to wear masks or physically distance when they are together without non-household cohort members nearby. If different "household cohorts" are using shared INDOOR spaces when together during the day or night, continue to monitor and enforce mask use, and healthy hygiene behaviors for everyone.	Health and Wellness Committee	August 2021
7. Only persons within the same housing cohort will be allowed in dorm rooms.	Health and Wellness Committee	August 2021





## 8. TESTING STRATEGY

Plan	Person(s) Responsible	Date of Implementation
<p>1. The options listed below reflect how testing effectively support safe and successful schools. We may use one or multiple of the following testing options depending on the rate of community transmission and the percentage of unvaccinated students we have on campus.</p>	<p>Director of Health Services</p>	<p>August 2021</p>
<p><b>2. Keeping track of Covid-19:</b> (lower case rates in the community)            --Periodic testing of a portion of unvaccinated asymptomatic student to understand school rates of COVID-19            --Given our small number of unvaccinated students, we will use lab-based PCR tests. We will do pre-entry testing on the entire student community. We will test all of our unvaccinated students monthly .</p>	<p>Director of Health Services</p>	<p>August 2021</p>
<p><b>3. Preventing Outbreaks of New Cases via Screening:</b> (higher case rates or outbreaks in the community)            --Screening testing for all unvaccinated people at high frequency (weekly or twice weekly) in order to prevent in-school transmission and prevent an outbreak on campus.            --Given our small percentage of unvaccinated students, we would test weekly using lab-based PCR.</p>	<p>Director of Health Services</p>	<p>August 2021</p>



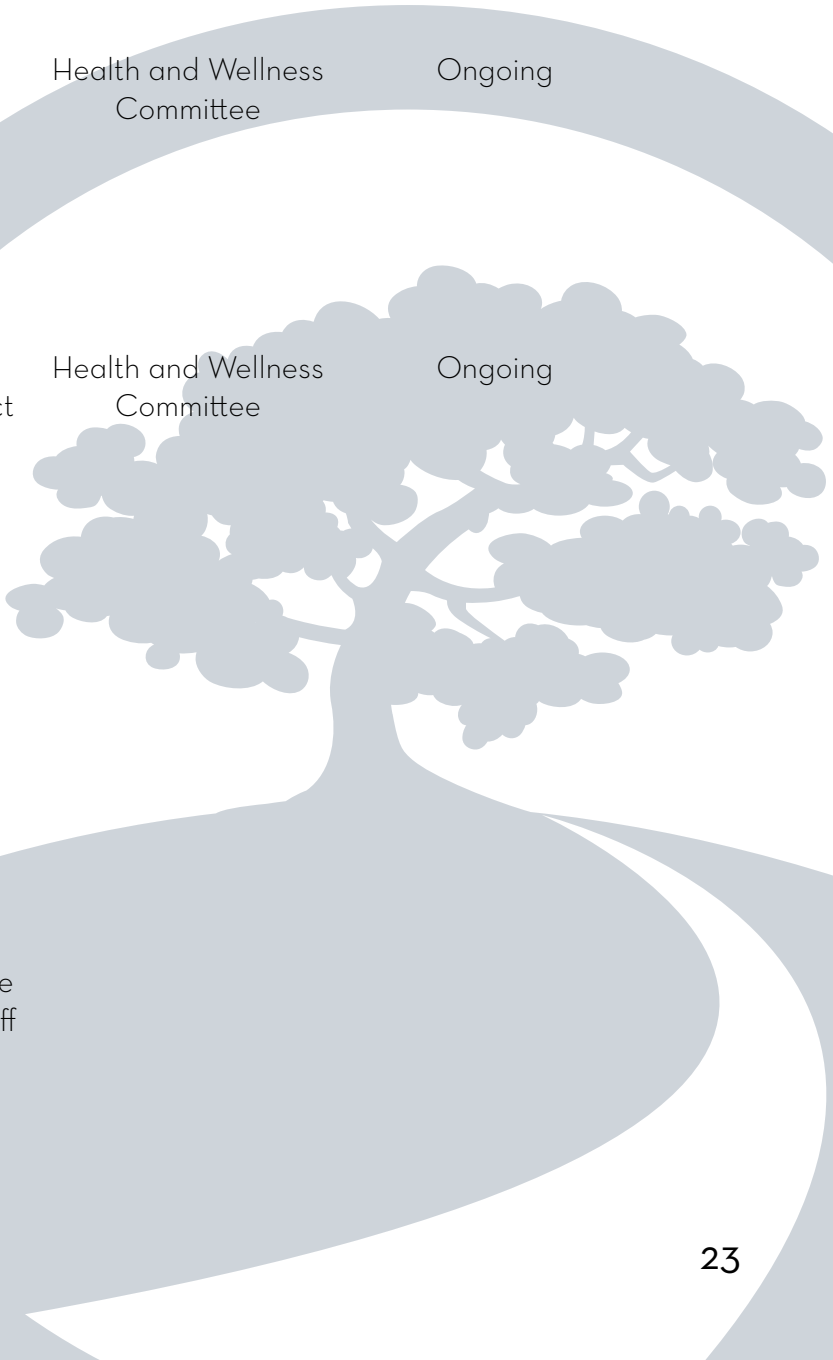
## 8. TESTING STRATEGY

Plan	Person(s) Responsible	Date of Implementation
<p><b>4. Responding to School Outbreaks:</b> (might happen at low or high community case rates.)</p> <ul style="list-style-type: none"> <li>--Testing unvaccinated close contacts and symptomatic vaccinated in a school outbreak, to find any potentially asymptomatic infectious individuals who should isolate to prevent infecting others</li> <li>--We would use lab based PCR, and/or CUE tests depending on the number of persons needing testing.</li> </ul>	<p>Director of Health Services</p>	<p>August 2021</p>
<p><b>5. Helping Keep Kids in School:</b> (symptom testing and testing to modify quarantine)</p> <ul style="list-style-type: none"> <li>--Testing students and staff with symptoms and testing to modify quarantine for unvaccinated close contacts</li> <li>--We are going to use the CUE rapid molecular test.</li> </ul>	<p>Director of Health Services</p>	<p>August 2021</p>
<p><b>6. Lab Based PCR:</b> we use the Valencia Branch Laboratory (VBL) under the CDPH guidance. Specimen collection is self-administered. individual is registered in the Color system,. Specimens are taken to VBL via the Courier network (CCN).</p>	<p>Director of Health Services</p>	<p>August 2021</p>
<p><b>7. Cue testing:</b> We will perform this test on individuals when a rapid molecular test is needed.</p>	<p>Director of Health Services</p>	<p>August 2021</p>



## 9. TRAINING AND EDUCATION OF STAFF AND STUDENTS

Plan	Person(s) Responsible	Date of Implementation
<p>1. Education on Covid-19 is ongoing, utilizing written communication, recorded webinars, and in person meetings. Education will continue during school orientation, as well as throughout the year as needed.</p>	<p>Health and Wellness Committee</p>	<p>Ongoing</p>
<p>2. Education provided has included the following: what Sars CoV 2 and Covid-19 are, how the virus is transmitted, mitigation strategies, the school plan, use of PPE, hand hygiene, physical distancing, face mask requirement, cleaning/disinfecting responsibilities, procedures and schedules.</p>	<p>Health and Wellness Committee</p>	<p>Ongoing</p>
<p>3. Special education regarding what to do if a student or staff member is feeling ill: Contact Health office during the week for staff and students., contact the AOD after hours and on weekends.</p> <p>--Do NOT come to campus or come out of your dorm room if feeling ill, regardless of symptoms, but especially if experiencing symptoms consistent with Covid-19 disease.</p> <p>--Any non-residential community member who has symptoms of Covid-19 has been educated to NOT come to work or attend class. Any community member who is not feeling well must contact Health Office or the Administrator on call. The individual situation will be discussed and evaluated to determine if the individual should participate in community life. If a student, or faculty/staff member becomes infected with Covid-19, they will be educated as to quarantine and isolation procedures, and what needs to be accomplished prior to returning to campus. See Quarantine and Isolation section.</p>	<p>Health and Wellness Committee</p>	<p>Ongoing</p>





## 9. TRAINING AND EDUCATION OF STAFF AND STUDENTS

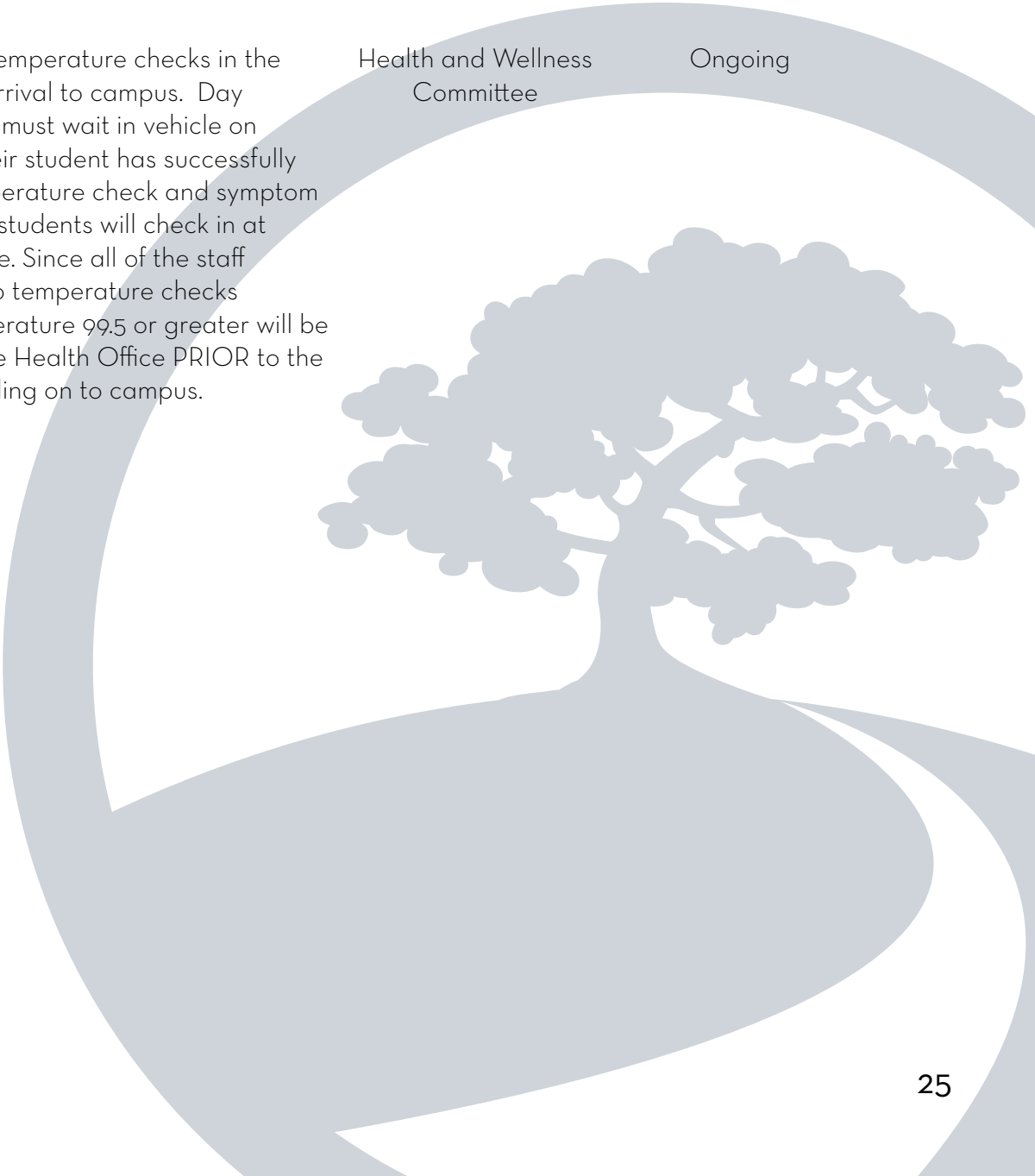
Plan	Person(s) Responsible	Date of Implementation
4. All faculty and staff have been encouraged to come forward regarding concerns they have about engaging in the school community. If an employee comes forward, information on employer and government-sponsored leave benefits that staff may be entitled to will be made available and discussed.	Health and Wellness Committee	Ongoing





# 10. CHECK FOR SIGNS AND SYMPTOMS

Plan	Person(s) Responsible	Date of Implementation
<p>1. Residential Students: Temperature check at breakfast check-in. Temperature check using touch-free thermometers. Any temperature 99.5 and greater will be evaluated by the Health Office.</p>	<p>Health and Wellness Committee</p>	<p>Ongoing</p>
<p>2. Day Students: Temperature checks in the morning upon arrival to campus. Day student parents must wait in vehicle on campus until their student has successfully completed temperature check and symptom screening. Day students will check in at the Health Office. Since all of the staff is vaccinated, no temperature checks required. Temperature 99.5 or greater will be evaluated by the Health Office PRIOR to the student proceeding on to campus.</p>	<p>Health and Wellness Committee</p>	<p>Ongoing</p>





# 11. PLAN FOR QUARANTINE AND ISOLATION

Plan	Person(s) Responsible	Date of Implementation
<p><b>1. Education:</b></p> <p><i>Quarantine:</i> Is used to keep someone who might have been exposed (close contact) to a contagious disease away from others. Quarantine helps prevent spread of disease that can occur before a person knows they are sick or if they are infected with the virus without feeling symptoms.</p> <p><i>Isolation:</i> Is used to separate people infected with the virus (those who Test positive are sick with COVID-19 and those with no symptoms) from people who are not infected.</p> <p><i>Close Contact:</i> Within 6 feet, for more than 15 minutes, regardless if wearing face protection or not, unvaccinated.</p>	<p>Director of Health Services</p>	<p>August 2021</p>
<p><b>2. Quarantine:</b></p> <ul style="list-style-type: none"> <li>--We will set aside two quarantine and isolation spaces on campus.</li> <li>--The locations used will have their own heating and cooling which is not shared with other spaces.</li> <li>--These individuals will use a single bathroom which will be off limits to other students.</li> <li>--Unvaccinated close contacts of a COVID-19 infected person will be placed in quarantine. Vaccinated close contacts of a positive COVID-19 person do not need to be quarantined unless they are symptomatic</li> <li>--Student parent/guardian will be notified as soon as the decision is made to place the student in quarantine</li> <li>--We will follow the CDPH guidance for quarantine as listed below:</li> </ul>	<p>Director of Health Services</p>	<p>August 2021</p>





# 11. PLAN FOR QUARANTINE AND ISOLATION

Plan	Person(s) Responsible	Date of Implementation
<p><b>3. Isolation:</b></p> <ul style="list-style-type: none"> <li>--Any residential student requiring Isolation (Sars CoV 2 positive) will be placed in Isolation</li> <li>--The parent/guardian will be alerted immediately and a request will be made to remove the student from campus within 48 hours for residential students and within 1 hour for Day students</li> </ul>	<p>Director of Health Services</p>	<p>August 2021</p>
<p><b>4. Scenario 1: Unvaccinated, asymptomatic, wearing masks:</b></p> <ul style="list-style-type: none"> <li>--When both parties were wearing a mask in the indoor classroom setting, the unvaccinated student may undergo a Modified 10-day quarantine as follows. They may continue to attend school for in-person instruction if they:               <ul style="list-style-type: none"> <li>--Are asymptomatic;</li> <li>--Continue to appropriately mask, as required;</li> <li>--Undergo at least twice weekly testing during the 10-day quarantine (Day 0,5,7) and</li> <li>--Continue to quarantine for all extracurricular activities at school, including sports, and activities within the community setting.</li> </ul> </li> </ul>	<p>Director of Health Services</p>	<p>August 2021</p>
<p><b>5. Scenario 2: Unvaccinated, asymptomatic, NOT wearing masks:</b></p> <ul style="list-style-type: none"> <li>--May discontinue self-quarantine under the following conditions:               <ul style="list-style-type: none"> <li>--Quarantine can end after Day 10 from the date of last exposure without testing; OR</li> <li>--Quarantine can end after Day 7 if a diagnostic specimen is collected after Day 5 from the date of last exposure and tests NEGATIVE.</li> </ul> </li> </ul>	<p>Director of Health Services</p>	<p>August 2021</p>



# 11. PLAN FOR QUARANTINE AND ISOLATION

Plan	Person(s) Responsible	Date of Implementation
<p>6. To discontinue quarantine before 14 days following last known exposure, asymptomatic close contacts must:</p> <ul style="list-style-type: none"> <li>--Continue daily self-monitoring for symptoms through Day 14 from last known exposure; AND</li> <li>--Follow all recommended non-pharmaceutical interventions (e.g., wearing a mask when around others, hand washing, avoiding crowds) through Day 14 from last known exposure</li> <li>--If any symptoms develop during this 14-day period, the exposed person must immediately isolate, get tested and contact their healthcare provider with any questions regarding their care.</li> </ul>	<p>Director of Health Services</p>	<p>August 2021</p>
<p><b>Symptomatic:</b> Advise staff members and students with symptoms of COVID-19 infection not to return for in-person instruction until they have met CDPH criteria to return to school for those with symptoms:</p> <ul style="list-style-type: none"> <li>--At least 24 hours have passed since the resolution of fever without the use of fever-reducing medications; and</li> <li>--Other symptoms have improved; and</li> <li>--They have a negative test for SARS CoV 2, OR</li> <li>--a healthcare provider has provided documentation that the symptoms are typical of their underlying chronic condition, OR</li> <li>--a healthcare provider has confirmed an alternative named diagnosis, OR</li> <li>--at least 10 days have passed since symptom onset.</li> </ul>	<p>Director of Health Services</p>	<p>August 2021</p>



## 12. CASE REPORTING, CONTACT TRACING AND INVESTIGATION

Plan	Person(s) Responsible	Date of Implementation
We will report positive COVID-19 cases to the local public health department using the SPOT tool and direct communication with the Nurses with Covid Schools.	Director of Health Services	August 2021
We will use a consistent approach to contact tracing, quarantine and isolation. All instances are reported on the Besant Hill Covid-19 Incident tracking form.	Director of Health Services	August 2021

## 13. MAINTAIN HEALTHY OPERATIONS

Plan	Person(s) Responsible	Date of Implementation
1. Protections for Persons at Higher Risk for Severe Illness from Covid-19: Depending on specific job duties, options for staff at higher risk for severe illness that limit their exposure risk will be implemented. Options for staff and students as feasible, to reduce transmission risk.	Director of Health Services	August 2021
2. Designated Covid-19 Point of Contact: Besant Hill Health Office: 805-646-4343, ext 442	Director of Health Services	August 2021
3. Vaccination verification: All staff, students, and campus residents will present their COVID-19 vaccination record to the Health Office. These vaccination records are kept in a confidential location.	Director of Health Services	August 2021



## 14. CONSIDERATIONS FOR PARTIAL OR TOTAL CLOSURES

<b>Plan</b>	<b>Person(s) Responsible</b>	<b>Date of Implementation</b>
<p>1. Ventura County Health Department has informed us that we do not need to inform them of every positive test, as they will be informed by the testing laboratory. They will conduct their own interview with the individual. They will receive that information from the testing laboratory. When there are 3 positive cases on campus, we must call and receive guidance on how to proceed.</p>	<p>Director of Health Services</p>	<p>August 2021</p>
<p>2. See the section about discussing Quarantine and Isolation procedures</p>		
<p>3. Shutdown may come from a statewide order, or result from an outbreak on campus. If there is an outbreak on campus and not in the surrounding region or state, we need to consult with public health experts to determine whether it is advisable for students to return home. Different options for local students and those who need to travel to other states or countries may be warranted.</p> <p>We would ONLY allow personnel living on campus to be on campus</p> <p>Shelter in place protocols -- Faculty teach classes from their homes, Students taking classes from their rooms</p> <p>Cleaning and Disinfecting: Close off areas of exposure and follow CDC cleaning guidance.</p>	<p>Director of Health Services</p>	<p>August 2021</p>



## 15. CONSIDERATIONS FOR FITNESS AND ATHLETICS

Plan	Person(s) Responsible	Date of Implementation
Masks will be worn while participating in Fitness and Sports when the individual is indoors.	Assistant Head of School	August 2021
We will follow CDPH, CDC, and CIF guidelines for participation in sports.	Assistant Head of School	August 2021

## 16. VACCINATIONS

Plan	Person(s) Responsible	Date of Implementation
1. Covid-19 vaccination is a requirement for employment at Besant Hill School. Verification of Vaccination is kept in a confidential file in the Health Services Office.	Director of Health Services	August 2021
2. Covid-19 vaccine is a requirement for day and residential enrollment at Besant Hill School. Medical Exemptions for vaccination are recognized and accepted at the school.	Director of Health Services	August 2021
3. Any student requesting to be vaccinated will require the following: Authorization/ consent from parents/guardian, and a letter from the school documenting the residential status of the student. The school will provide transportation to the vaccine provider.	Director of Health Services	August 2021
4. Evidence of vaccination is kept within the student's Health Profile within School Doc.	Director of Health Services	August 2021